



TOLPUDDLE OLD CHAPEL TRUST

Company number: 8908950 Registered Charity number 1159578

What is TOCT?

The Tolpuddle Old Chapel Trust is an independent building preservation trust formed with the support of the Architectural Heritage Fund. The Trust is a company and a registered charity. Its Trustees are people who live locally or have a personal interest or passion for the building and its history.



Adrian Whittlesea | Revd Stephanie Jenner | Rob Brunt, Secretary | Andrew McCarthy, Chairman

The Trust has also been supported by volunteers assisting with finance, project coordination, legal matters and administration.

TOCT Progress

The process of developing the project to renovate the former chapel commenced before the building and site were purchased in February 2015. The key achievements of the Trust to date include:



- ◀ Building survey and viability report funded by the Architectural Heritage Fund
- ◀ Emergency repairs funded by Historic England
- ◀ Conservation report funded by Historic England
- ◀ Architectural Heritage Fund support for project development
- ◀ Project architect Architecton has developed draft plans
- ◀ Corporate support for legal work, information board and project development
- ◀ Dorset County Council support for project development
- ◀ West Dorset District Council support for project development
- ◀ Heritage Lottery funding for a start-up grant for conservation, business planning and Trust development



TOLPUDDLE OLD CHAPEL TRUST

Company number: 8908950 Registered Charity number 1159578

How can you help?

To renovate the former chapel the project needs your help.

You can support the Trust by:

Becoming a 'Friend' of TOCT to show support for the project and to keep you informed of progress.

Giving us your views and ideas.

Attending subsequent events.

Volunteering to help the Trust with the project.

Helping us raise £300,000 to preserve, renovate and maintain the former chapel and site.

Contact a Trustee



TOCT, PO Box 7755, Dorchester, DT1 9GQ



tolpuddleoctrust@btinternet.com

giftaid it

Visit our website and find out how to donate, how we can claim Gift Aid and how we will acknowledge your support

Sign up to become a friend of TOCT

www.tolpuddleoldchapeltrust.org





TOLPUDDLE OLD CHAPEL TRUST

Company number: 8908950 Registered Charity number 1159578

What you said?

TOCT has held two public consultation events on the former chapel project.

27TH JUNE 2015

ST JOHN'S CHURCH. TOLPUDDLE

The consultation was attended by 41 people and provided information about TOCT, the aspirations of the project and explained the progress made.



Attendees were asked to give their views on eight questions and give their thoughts on the project and ideas for use.

In summary:

THOUGHTS ON PROJECT

Delighted/Brilliant/Great/Good

MAIN SUGGESTED USES

- Meeting Room
- Reading/Book Groups/Uses
- Art/Craft Exhibitions/Activities
- Musical Activities
- Refreshment Provision

'I am delighted that at last the old chapel is being taken care of and I am sure it will be very interesting to Tolpuddle visitors'

'Great to see the building preserved, fully support the project'

	Strongly Agree	Agree	Unsure	Disagree	Strongly Disagree
The former chapel should be appropriately renovated and maintained for future generations	29 (100%)				
The internal look and feel of the former chapel should be very simple and in keeping with its heritage	27 (100%)				
Any extension/additional building on site should be linked to the former chapel but subservient in scale to the existing building	20 (69%)	9 (31%)			
Essential services and facilities such as storage, toilet etc should be housed in an appropriate extension/additional building	24 (92%)	2 (8%)			
The former chapel should be open during the daytime (say 10-4) as a 'quiet place' free of charge	12 (41%)	9 (31%)	8 (28%)		
The building should be available for other uses in the evenings, complementing the village hall.	17 (58%)	5 (17%)	6 (21%)	1 (4%)	
Information about the history of the building should be displayed in the new extension/addition	26 (84%)	2 (7%)	1 (3%)	1 (3%)	1 (3%)
The story of the former chapel should be available on the existing Tolpuddle Martyrs Trail app and TOCT website	23 (70%)	10 (30%)			



TOLPUDDLE OLD CHAPEL TRUST

Company number: 8908950 Registered Charity number 1159578

Tolpuddle Martyrs Festival – 18th & 19th July 2015

TOCT took the opportunity to celebrate the acquisition of the building and set up stall on site on the Saturday between 12 noon and 4pm and the Sunday between 11am and 5pm. Trustees were on hand to discuss the project and the door of the former chapel was open so people could view in.



In total 245 people attended the open days with 64 signing up as a Friend. Visitors were asked to 'post' their comments on the project on a symbolic tree outside the former chapel.



Comments received included:

'Splendid to see this symbolic building coming to life again – a splendid community and legacy project. Well done!'

'The proposed plans are an exciting and innovative way of bringing this historic building back into productive use. Good luck'

'It's essential this historic building is restored to ensure the spirit of the Tolpuddle Martyrs is continued to inspire others to fight for their freedom and support others'

'An excellent project that needs your support. We need to keep the memories alive for future generations.'

'It's great that this lovely old building of such significance is at last to be renovated. Many thanks to all working on the project.'

'Amazing project – pleased to see it in good hands'

'So glad your story is being told – have walked past this old cob walled building for 15 years ... and never knew!!'

'What a wonderful focus for an important movement! Look forward to returning to support your vision. A place of retreat is welcome in this busy world!'

'Absolutely good news – I am delighted we have it at last – I have prayed for this day.'

'May this space be blessed with Grace, Justice, Prayer, Action'

'I look forward to sitting and reading poetry in here. We support'



TOLPUDDLE OLD CHAPEL TRUST

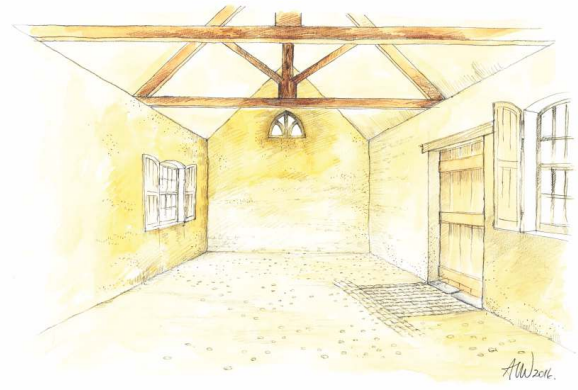
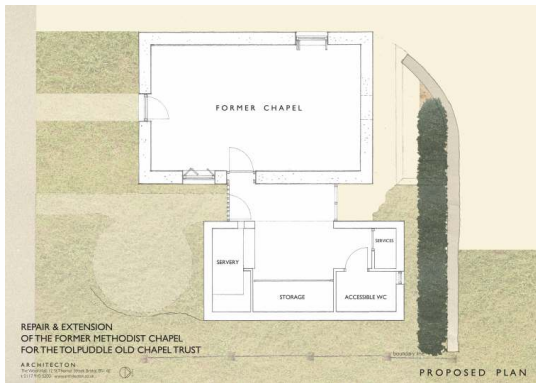
Company number: 8908950 Registered Charity number 1159578

What we want to do - Design

The architect for this stage of the project, Paul Richold, has been working closely with TOCT Trustees and the statutory bodies of West Dorset District Council and Historic England.



The renovation proposals for the former chapel and the designs for the new extension have been developed through many stages and with guidance from the formal approval body, Historic England.



Historic England

"Historic England is pleased to support and encourage the Tolpuddle Old Chapel Trust in its on-going work to secure the repair and long term viable use for this important building. Its connection with the Tolpuddle Martyrs makes the former chapel of real and very great historic interest.

On TOCT's possession of the former chapel in February 2015, we were able to provide initial grant aid of £9500 towards emergency repairs and £3300 for a Conservation Report by Keystone Heritage Building Consultants. We have also been pleased to offer initial advice on the former chapel's repair and possible alterations and look forward to continuing to work with the Trust in developing this project."

Sarah Ball, Heritage at Risk Architect, Historic England



TOLPUDDLE OLD CHAPEL TRUST

Company number: 8908950 Registered Charity number 1159578

What we want to do - Use, Interpretation & Activities

As part of securing Heritage Lottery funding we want to look at how we can engage with people and communities through the project.



Artist impression inside extension

IDEAS FOR USE

Once the renovation and extension are complete, the former chapel will be open daily, free of charge. We are also looking at using the former chapel occasionally in late afternoon/evening for:

SMALL MEETING ROOM
MUSICAL EVENTS
ART EXHIBITIONS/ACTIVITIES
READING/BOOK GROUPS
REFRESHMENT PROVISION
(for the above events and uses)

TOCT trustees want the inside of the former chapel to be an atmospheric and evocative space, it will therefore have hidden heating and subtle lighting with minimal furniture such as a simple timber bench seat. We will not put fixed exhibition panels or other interpretation in this space. Our ideas for interpretation include:

Additional resources about the history of the former chapel available through an external screen carefully built into the wall by the extension doorway and through an internal screen in the extension

'Upright archeology' – a guide to the building's history, stages of development/use, how the decisions to renovate it were made and how the work was carried out. This would be as a printed guide and a film version available on screen, and on the TOCT website

Additional unit for the Tolpuddle audiovisual Trail

A touring exhibition on the former chapel including its Methodist origins

A large banner type display in a 'Hogarth' style which can be displayed in the extension over the doors to the furniture store, when access to the store is not needed

OUTLINE ACTIVITY IDEAS

TOCT plans to provide future new activities:

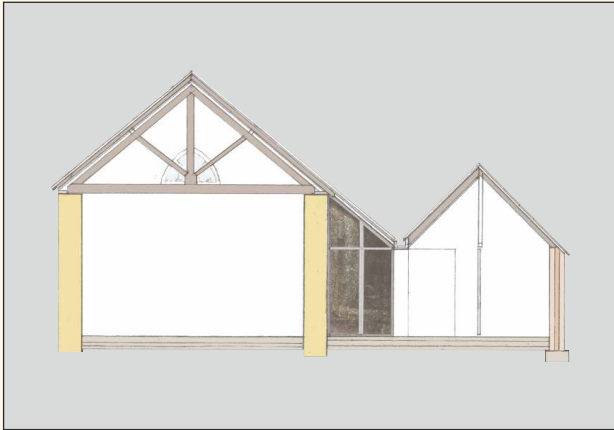
- ▶ New Citizenship school package for local and national use
- ▶ Volunteer led tours of the former chapel
- ▶ A range of historical talks
- ▶ Develop a new community performance



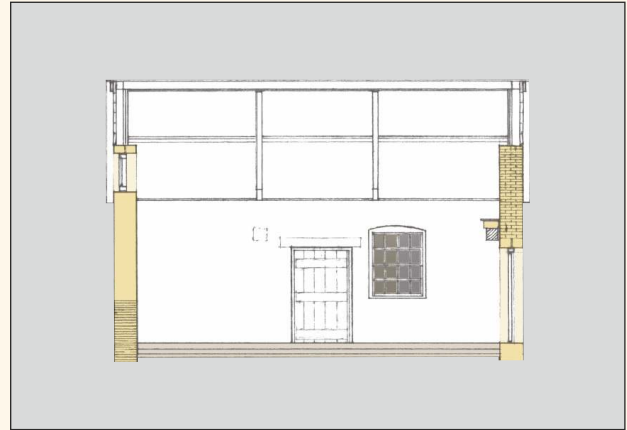
TOLPUDDLE OLD CHAPEL TRUST

Company number: 8908950 Registered Charity number 1159578

What's next?



East-West section through former chapel and extension



North-South section through former chapel

TOCT are preparing applications to a number of funders including the Heritage Lottery Fund (HLF). If the HLF round 1 application is successful the next stage of the project (which will take about a year) is to prepare the second round application and secure planning and listed building consent, raise the required match funding and confirm all the ideas for activities, interpretation and how the former chapel will be operated and managed.

During the HLF second round TOCT will be continuing with consultation with the local community, stakeholders and visitors to Tolpuddle.

Please place your voting slip into the box giving your response to the following statement:



I support the **TOCT** proposals to:

- ▶ Renovate the former chapel
- ▶ Preserve this important heritage building
- ▶ Provide an extension for vital services
- ▶ Provide a venue for activities and events
- ▶ Develop new interpretation and a range of heritage related learning projects

Strongly Agree	Agree	Unsure	Disagree	Strongly Disagree

If you have any comments or further thoughts please use the back of your voting slip.



TOLPUDDLE OLD CHAPEL TRUST

Company number: 8908950 Registered Charity number 1159578

How much do you like our ideas for interpretation and new activities?

Please place a sticky dot for each idea	Great idea 1 ←	2	3	4	→ Not a good idea 5
Small meeting room					
Reading/book groups					
Art exhibitions/activities					
Musical events					
Refreshment provision					
Extra former chapel content on the Tolpuddle AV trail					
Extra former chapel content on the display screens and as a printed leaflet					
'Upright archaeology' guide					
Touring exhibition					
Large banner display in the extension					
New Citizenship school package					
Volunteer led tours					
A range of historical talks					
A new community performance					